

PART OF THE NE. 1/4, OF SECTION 21, T.6N., R.2E., S.L.B. & M.  
**SUNSHINE VALLEY ESTATES SUBDIVISION PH 1**

156

TAXING UNIT: 520

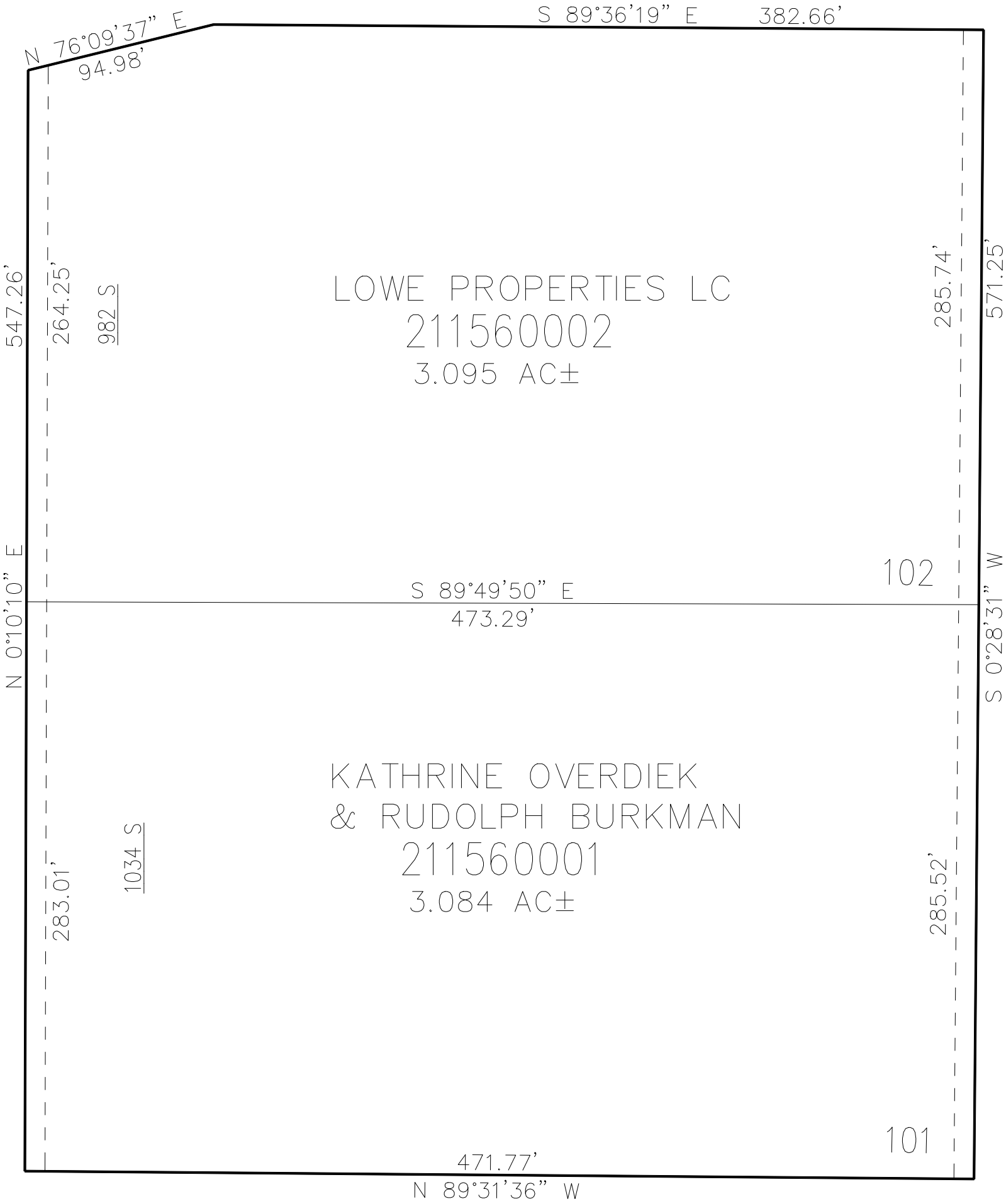
IN WEBER COUNTY  
SCALE 1" = 60'

SEE PAGE 35

9275 EAST STREET

SEE PAGE 35

SEE PAGE 35



10' UTILITY & DRAINAGE EASEMENTS EACH  
SIDE OF PROPERTY LINES AS INDICATED  
BY DASHED LINES EXCEPT AS OTHERWISE  
SHOWN.

SEE PAGE 35

FOR COMPLETE ENG DATA SEE  
ORIGINAL DEDICATION PLAT IN  
BOOK 86, PAGE 75 OF RECORDS.